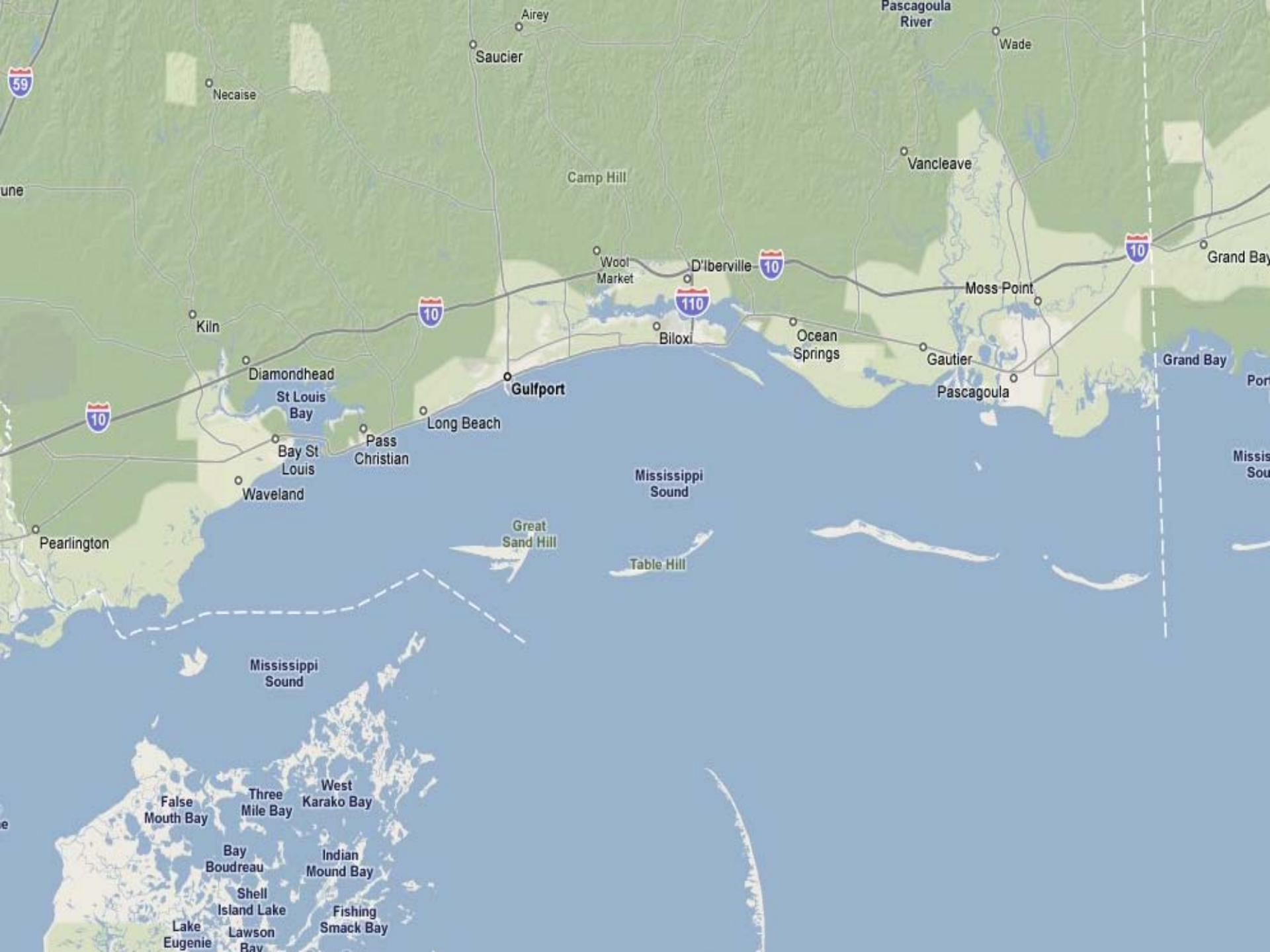
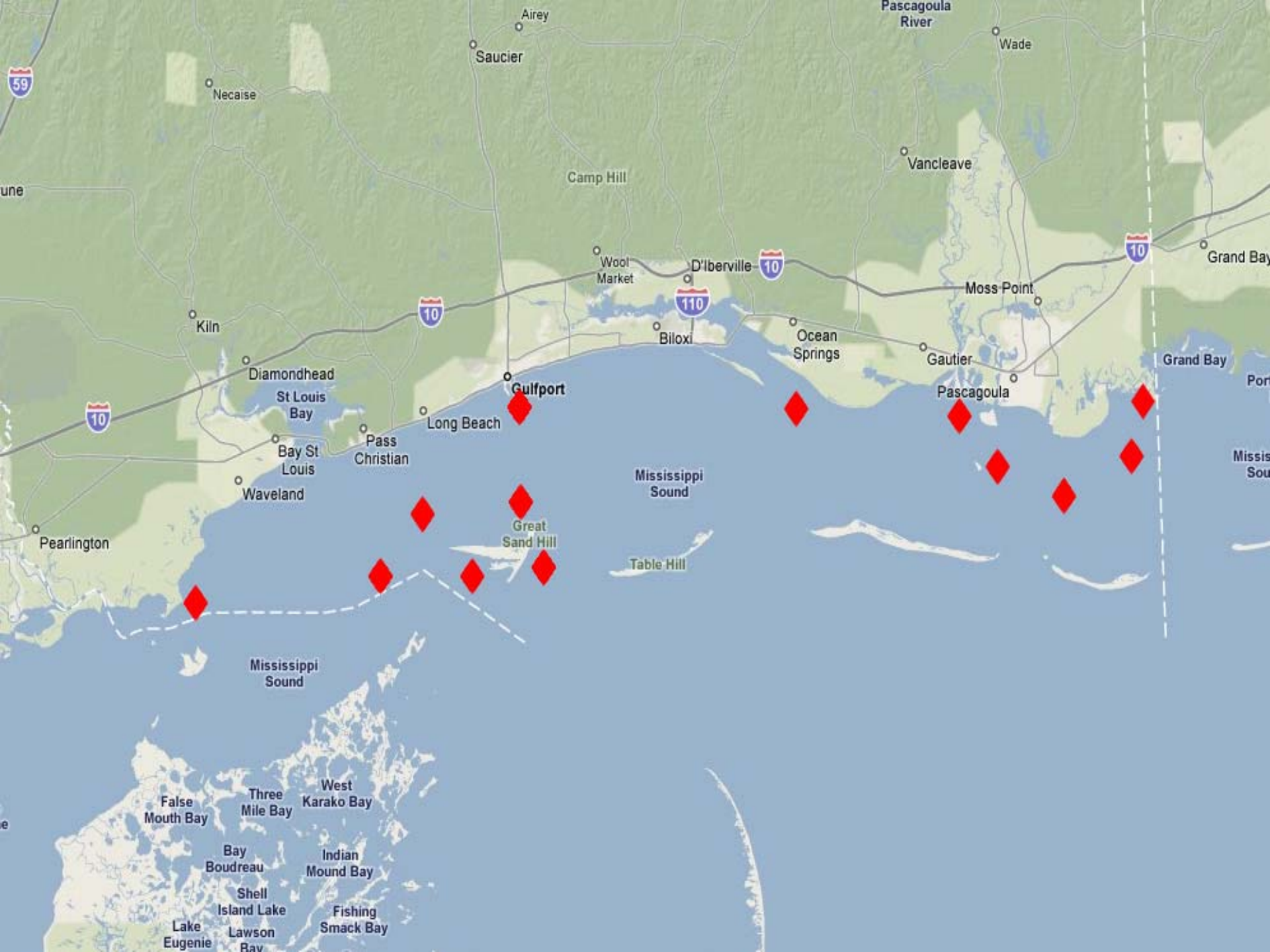


Mississippi Harmful Algal Bloom Monitoring

MS Department of Marine Resources

- ❖ Collects routine water samples by boat
- ❖ Makes field observations for signs of discolored water
- ❖ Samples are taken quarterly
- ❖ 13 Sample stations along the Mississippi Sound
- ❖ Samples are driven to the Alabama Department of Public Health Mobile Division Laboratory for review
- ❖ Additional water samples are taken when necessary





Mississippi Harmful Algal Bloom Monitoring

MS Department of Marine Resources

- ❖ Volunteer for the Phytoplankton Monitoring Network
- ❖ An outreach program to monitor and maintain HAB events throughout the coast
 - ❖ Provides qualitative data to scientists.
 - ❖ To create a comprehensive list of harmful algal species inhabiting coastal marine waters
 - ❖ To monitor and maintain an extended survey area along coastal waters throughout the year
 - ❖ To isolate areas prone to harmful algal blooms (HABs) for further study by Marine Biotoxins researchers
 - ❖ To identify general trends, such as time and area, where HABs are more likely to occur
 - ❖ To create a working relationship with open communication between volunteers and researchers through PMN

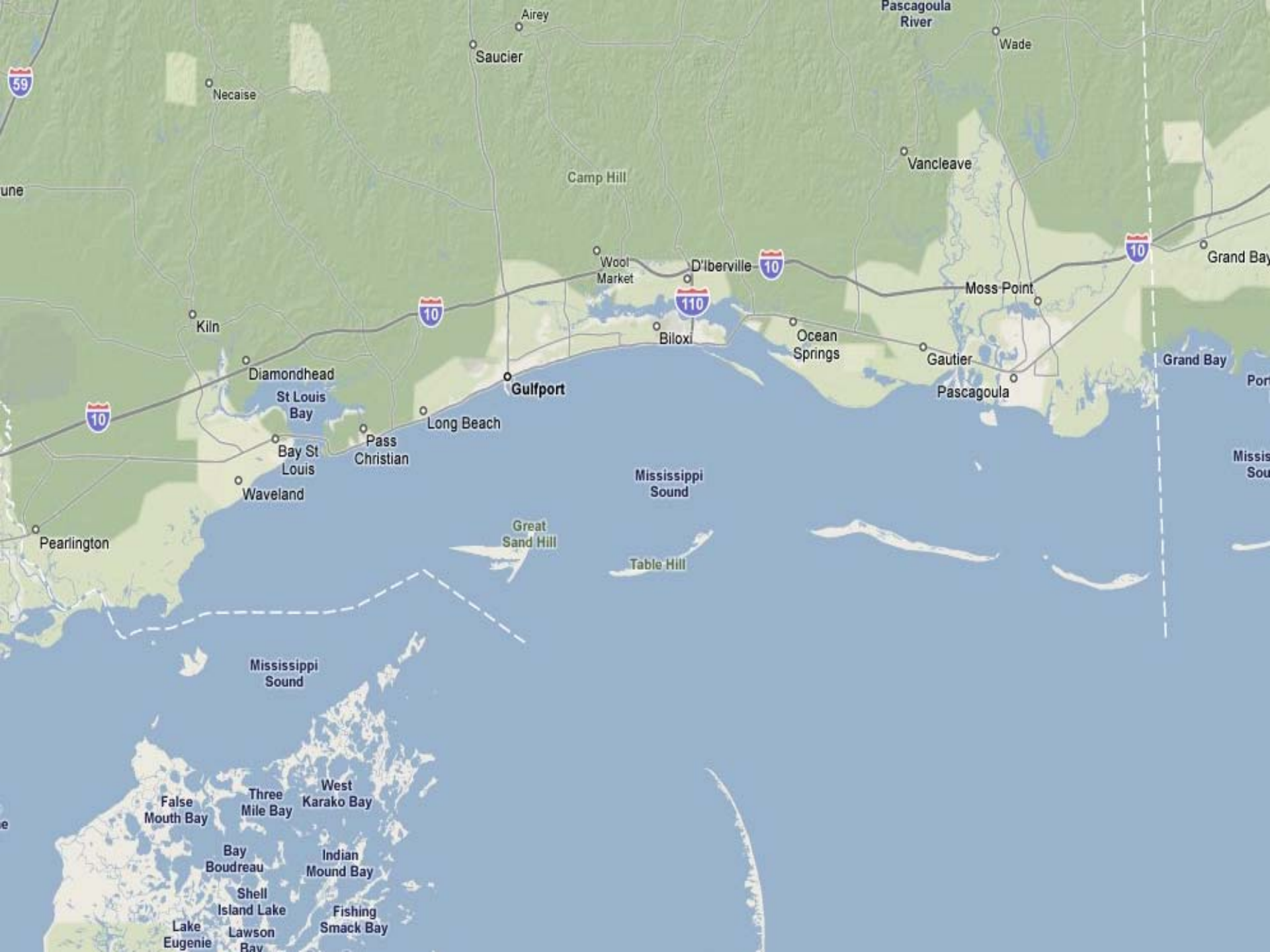
Mississippi Harmful Algal Bloom Monitoring

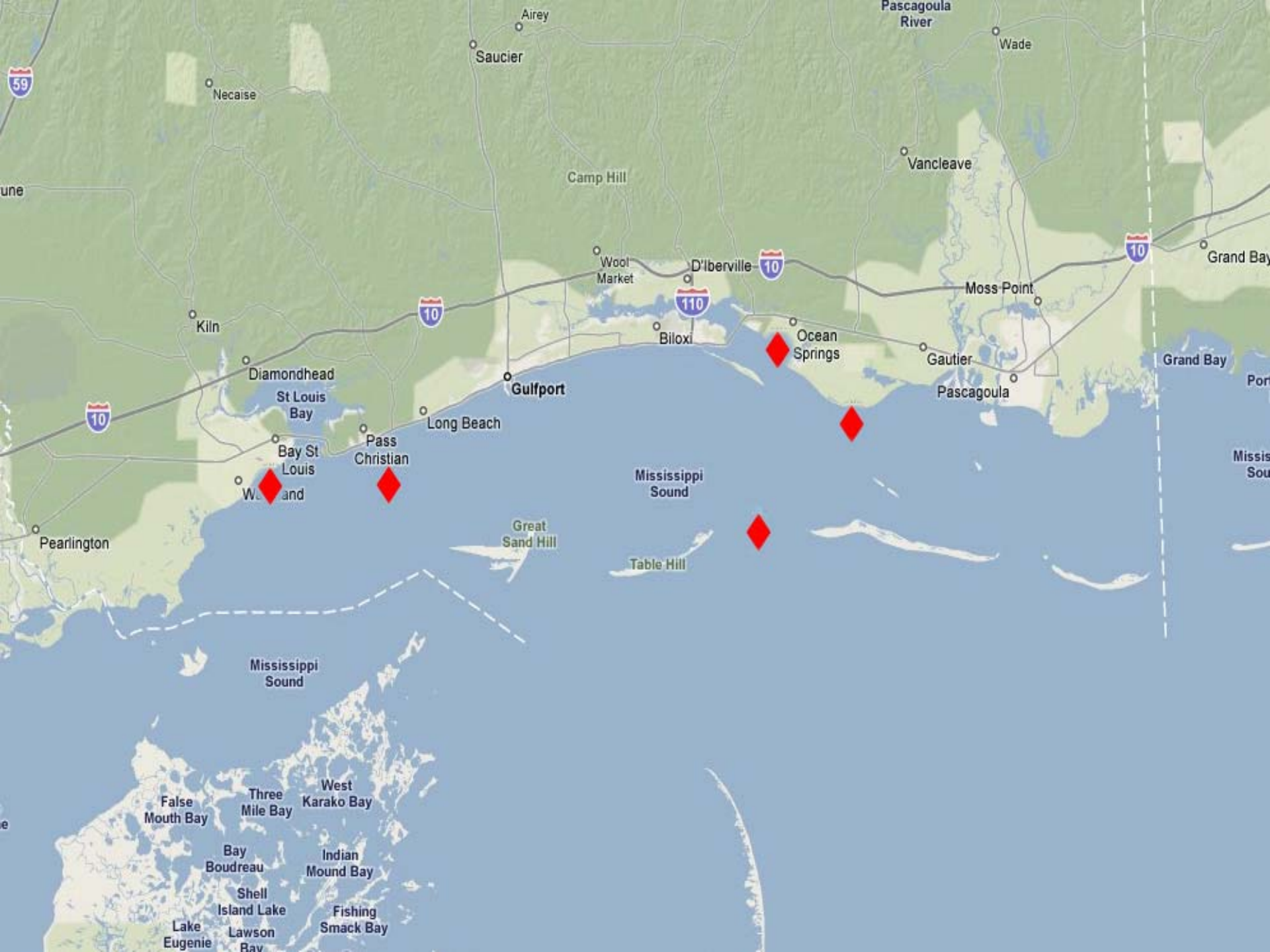
Phytoplankton Monitoring Network

- ❖ Equipment includes: plankton net, sample bottles, salt refractometer, thermometer, Lugol's solution
- ❖ Volunteer responsibilities include:
 - ❖ Attend annual PMN training sessions
 - ❖ Choose and regularly monitor a convenient sampling site
 - ❖ Sample site weekly or bi-weekly
 - ❖ Perform preliminary identification of common species
 - ❖ Preserve samples with any species in high abundance
 - ❖ Submit data via online data entry (fax or email)

Current Mississippi PMN Volunteers

- ❖ MS Dept of Marine Resources – Shellfish Bureau
 - ❖ Site: Pass Christian Oyster Reef
 - ❖ Group Volunteers: Kristina Broussard, Steve Breland
- ❖ University of Southern Mississippi – Gulf Coast Research Lab and Center for Fisheries Research and Development, Ocean Springs, MS
 - ❖ Sites: GCRL Fishing Pier, St. Andrews Beach & Dog Key Pass
 - ❖ Group Volunteers: Adrienne Flowers, Dawn Rebarchik, Dr. Patrick Biber
- ❖ Independent Volunteer, Bay St. Louis, MS
 - ❖ Site: Washington Street Pier
 - ❖ Group Volunteer: Kay Ward-Lange





Needs

- More Public Education within the State
- Better Coordination with Monitoring between Research Activities and State Managers
- Increase Communication within the Gulf States